



COST ACTION FP 0703

**Echoes: Expected Climate cHange
and Options for European Silviculture**

Country Report: Major points



AUSTRIA

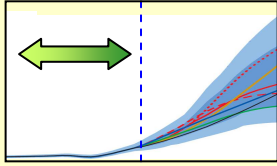


22-24 January 2009, Florence - Italy

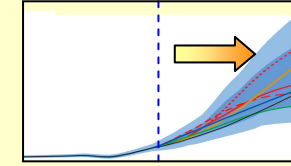
Manfred J. Lexer

*Institute of Silviculture, University of Natural Resources and Applied
LifeSciences, Vienna (BOKU)*

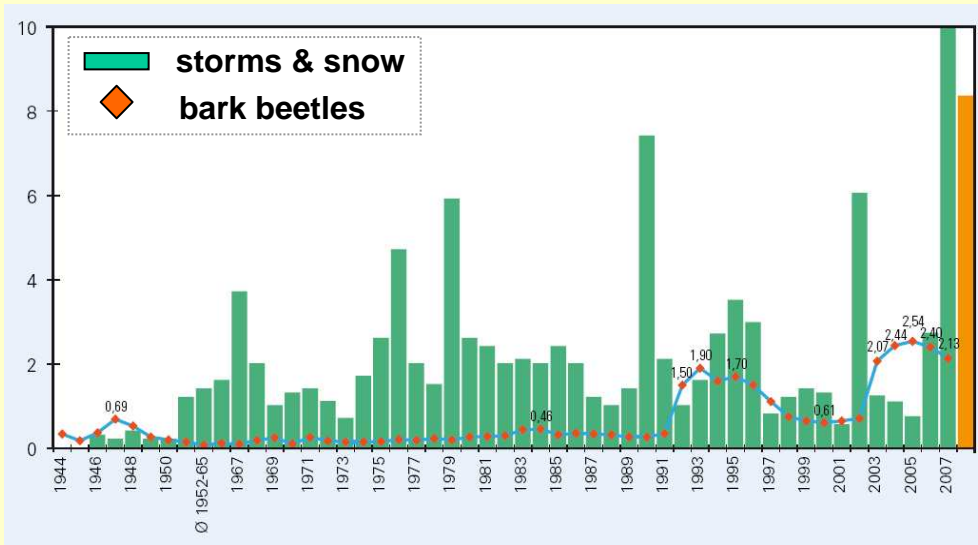
mj.lexer@boku.ac.at



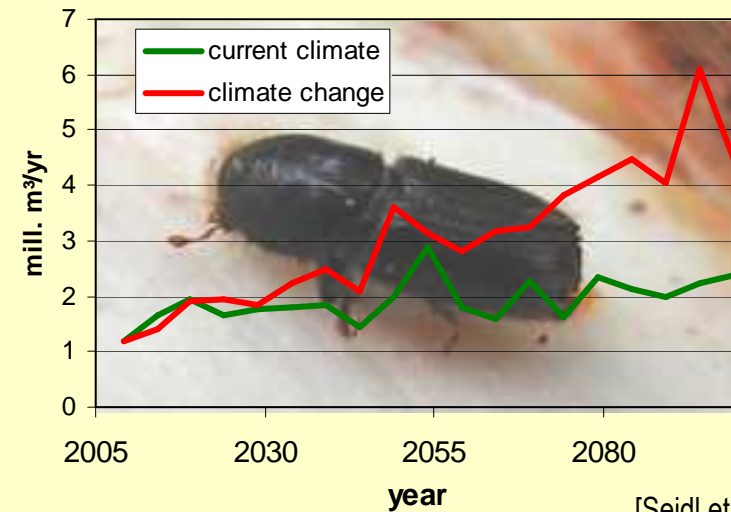
impacts



- **increased damages from natural disturbances**
 - bark beetle damages extend into high montane vegetation zones
 - protective function is 1st priority on ~30% of forest area



(BFW, 2008)



[Seidl et al., 2009]

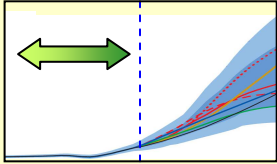
methods & material

- (-) large scale scenario model EFISCEN
- (-) SRES scenario: B1 (+2.4 °C)
- (-) management: business as usual



in cooperation with EUROPEAN FOREST INSTITUTE

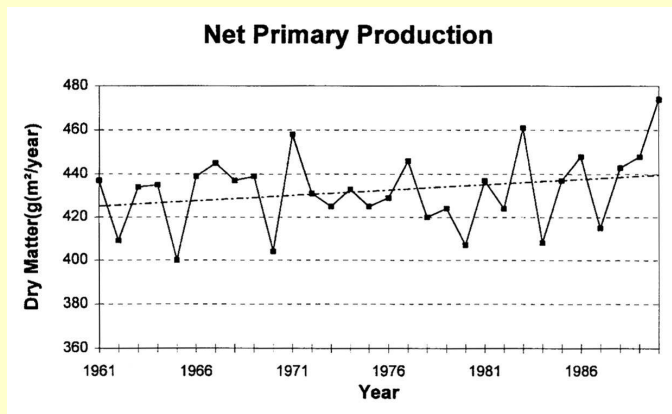




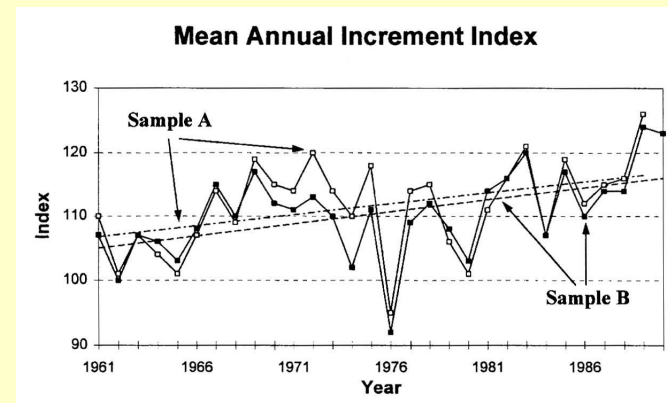
impacts



- increased damages from natural disturbances
- **productivity increases**
 - national forest inventory (Spiecker et al. 1999, BFW 2004)
 - growth and yield studies (BFW 2005)
 - model analysis



simulation with BIOME-BGC



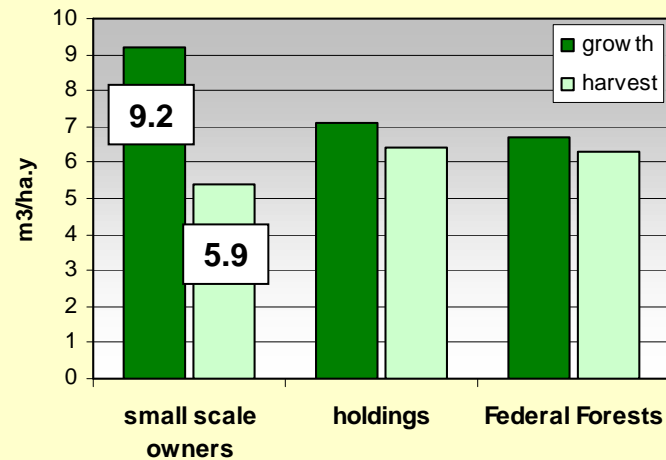
based on tree ring data

(Hasenauer et al. 1999)

adaptation

- ***Austrian Adaptation Strategy*** under development
(available by 2011)
- **activities at provincial level organised by extension services of Chambers of Agriculture & forest administration services**
 - incentives for re(af)forestation of mixed(-broadleaved) forests
 - ~ 30% of total stand establishment cost subsidized
 - ~ 10.000ha in pre-alpine foothills of Austria since 1990
 - field trials to test production potential of broadleaves (*Acer pseudoplatanus*, *Fraxinus*, *Quercus robur*, ...)
 - organisation of seminars and workshops for awareness building & knowledge dissemination

mitigation



intensified biomass extraction



heavy (fully mechanized) thinning in unmanaged stands

- **mobilization of timber resources in small scale ownership class** (54% of forest area)
 - organisational and operational support by extension services of Chambers of Agriculture & forest administration services
 - **Issues:**
 - Intensified biomass extraction = litter raking of the 21st century ?
 - unthinned stands = „tending reserves“ ?



Thank you!

Manfred J. Lexer
Institute of Silviculture
Tel.: 01 - 47654 4056
Fax: 01 - 47654 4092
e-mail: mj.lexer@boku.ac.at

<http://www.wabo.boku.ac.at/wald-klimawandel.html>

